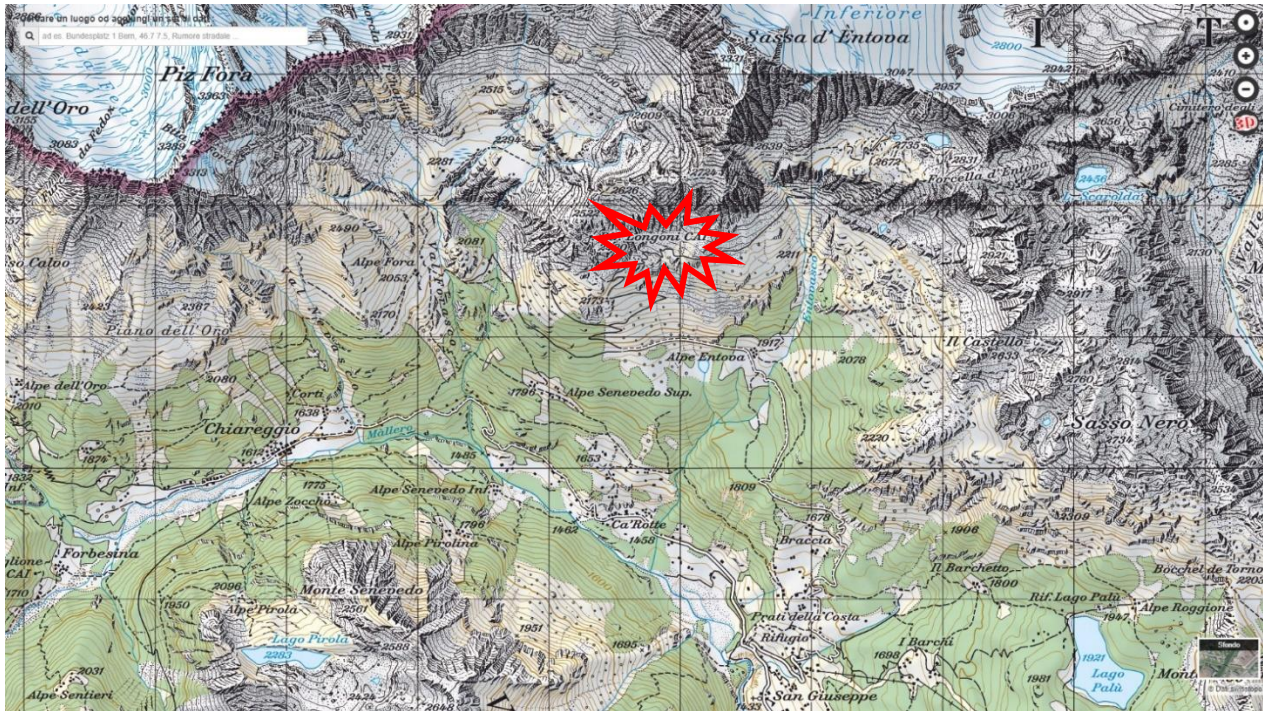


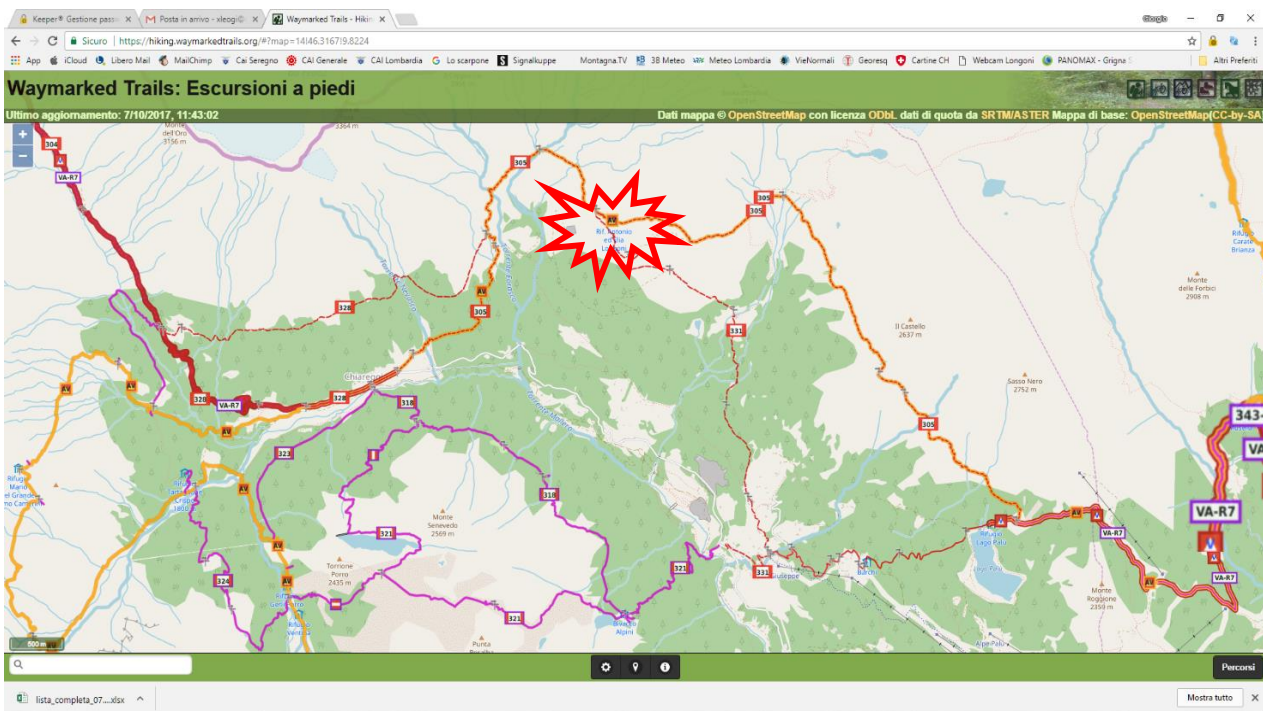
Longoni hut 2450 m.a.s.l Sassa d'Entova SW ridge
Municipality of Chiesa in Valmalenco District of Sondrio - Italy



Where the hut is: map



How to reach the hut: tracks



Coordinates: Latitude 46°19'49,0" Longitude 9°49'10,2"

Attached tracks: GPS Rifugio Longoni *.gpx / GoogleHearth Rifugio Longoni *.kml

Contacts

Manager **NEW MANAGEMENT: Eugenio Pedrotti and family**

Hut phone +39 0342 451120 (during the opening season: beginning of June end of September)

Mobile for contact and reservation +39 3487124871 / +39 3343764825

e-mail for contact and reservation rifugiolongoni@gmail.com

e- mail sezione proprietaria CAI Seregno caiseregno@gmail.com



How to reach the hut

- **from Chiareggio**, hamlet of municipality of Chiesa in Valmalenco, by trail 305 ALTA VIA well traced and marked
 - time 2h 30m
 - difference in level 850 m
- **da San Giuseppe**, hamlet of municipality of Chiesa in Valmalenco, by trail 331 well traced and marked
 - time 2h 50m from Sasso Nero Inn parking
 - difference in level 850 m



The hut

Accommodation

24 beds

2 rooms with 6 beds

1 room with 4 beds

1 room with 9 beds



34 seats in the lunchroom

18 seats in the dehors

Winter shelter (air and sleeping bed are required)





Service and Facilities

Services	Traditional cuisine
Facilities	Bathroom and hot shower
	Electric supply 220V
	4G mobile connection 100% coverage

Trekking and Ascents

Trekking	To Del Grande-Camerini hut along Alta Via della Valmalenco difficulty EE
	To Marinelli Bombardieri hut along Alta Via della Valmalenco difficulty EE
	To Maloja Pass through Passo del Muretto difficulty EE
	To Sils Engadina through Passo Tremogge and Fex Tal difficulty EEA
Ascents	Sassa d'Entova 3331 m difficulty EEA PD
	Pizzo Malenco 3438 m difficulty EEA PD
	Pizzo Tre Mogge 3441 m difficulty EEA PD
	Pizzo Tre Mogge 3441 m coluar SE difficulty EEA PD+
	Sassa di Fora 3363 m difficulty EEA PD

